

Beutiful Dogs

Por: Clara e Mariana



Dachshund

Is a breed of dog originating from Germany. This race is embedded in FCI's own group due to its wide range of size and coat: standard, miniature and kaninchen, the long, flat and hard. It is described as hunter rings, fairly accurate sense of smell, which allows you to easily follow leads, which makes it effective in raids to small prey. It is said still a good sleuth, able to pursue larger animals since, despite short legs, is light.

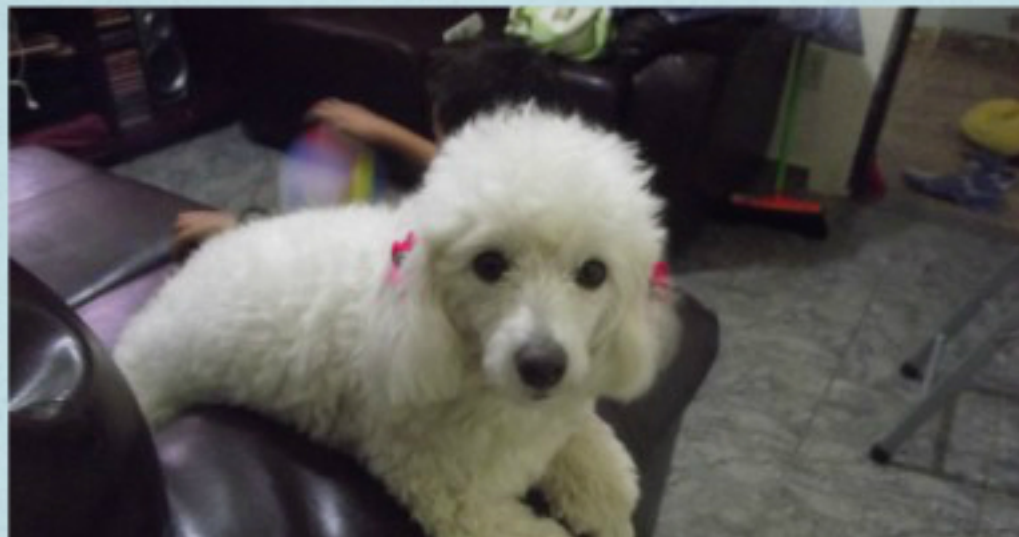
Historically is an ancient breed, which, according to some historians, date of five thousand years, in view of the similar images physique were found in the tomb of a pharaoh. Anyway, it is known that dogs were developed by modern German hunters, seeking a dog agile, sturdy and small enough to go into dens of badgers, hares and rabbits. The result were nine different patterns. Brought to England, were part of the English court, what further popularized. His physique is no longer measured by weight, but by the circumference of your chest, which ranges from 30 cm to over 35 cm. His personality while hunting dog, is said brave and fearless, now as a companion dog, is known for his cleverness, intelligence and energy to brincadeiras. Your life expectancy is among the highest in the canine world, more than twelve years, although it is not uncommon to see examples of past twenty.



Colors: There are 4 colors present in Dachshunds, Cinnamon, Black, Chocolate and Wild Boar. These colors can be affected by the presence of the dilution gene, and exhibit varied phenotypes. Cinnamon can vary from cream to yellow.

Black has to be diluted phenotype also called gray blue. Chocolate to be affected by dilution dog exhibits the phenotype Isabella, clear gray, similar staining present in much of Weimaraner dogs. Boar can also be affected by the presence in the key of dilution. Any color can be present in any coat or patterned.

Fonte:wikipedia e google imagens



Poodle

It is considered the second most intelligent breed in the world, according to a list compiled by Stanley Coren. Historically, these dogs were bred to work in the water, having one of its trims designed to reduce friction and protect against the cold in their most delicate areas such as the legs and chest. For days the Germans demanded the creation of the poodle. However, according to the official documentation of the International Federation, France is seen as the nation of origin.

FONTE DA IMAGEM : computador da minha tia



Physically, the size varies between large poodle and toy, in its larger specimens the most kind, obedient, healthy, treatable with sebaceous adenitis being ranked as their main efermidade. The physical qualities of the standard pattern became a good

companion dog for families living in large areas, like farms. The minor variations - called average or miniature and toy - the ides existed since 1700, but have only been recognized in the twentieth century. In some countries it is recognized even dwarf variant, although for some it does not make much sense, since the animal is not disproportionate. Artificial crosses poorly designed during the 1950s generated a bad name for these tiny canines, which fortunately happened to fall over the years. These minor variations were created to generate companion dogs whose longevity reached nearly fifteen years - the highest on average among all dogs. More prone to disease than their larger kin, may suffer from halitosis, periodontal disease, hereditary blindness and cataracts.

The physical poodle varies between 32 and 2.5 kg, measuring 25 cm to more than 38. His coat has different color.

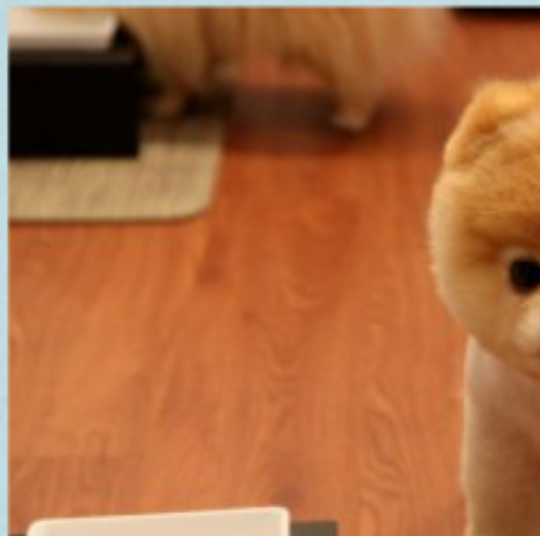
FONTE: wikipedia e google imagens



Splitz Alemão

is a breed that originated in Germany has three distinct varieties of size: the giant, standard and miniature, popularly known as lulu-of-Pomerania. Historically, these animals came to Europe taken by the Vikings, being first mentioned in German literature in 1450. While the midsize cainino was created for grazing, the other two are designed to be companion dogs. Why not like to be commanded, must be trained from an early age. They are still classified as alerts and outgoing, stubborn though.

Its physical reaches 40 inches and weighs 19 kg for variant giant; can measure already the standard 36 cm and up to 12 kg, while the toy weighs more than 10 kg and measures 28 cm.



The lulu, a miniature version of the spitz, has become popular due to Queen Victoria, who had bred as companion. Unlike the other variants, the lulu is easily trained when young. According to the standard set by the FCI, this canine is accepted in almost all colors. Despite the long, it

There tosa specific race, asked that only his mustache under the nose and the legs are trimmed.

Fonte : wikipedia e google imagens